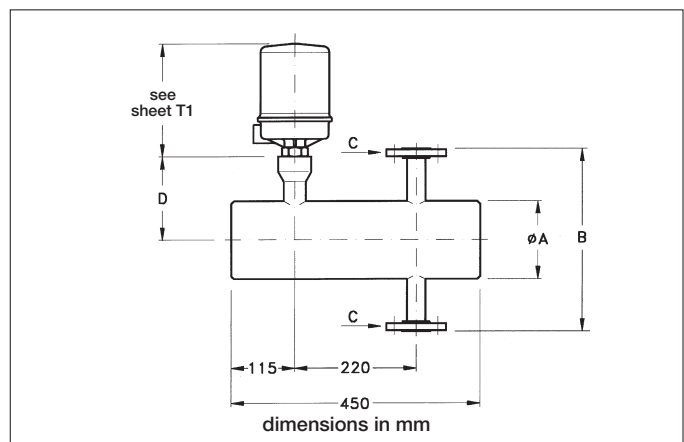
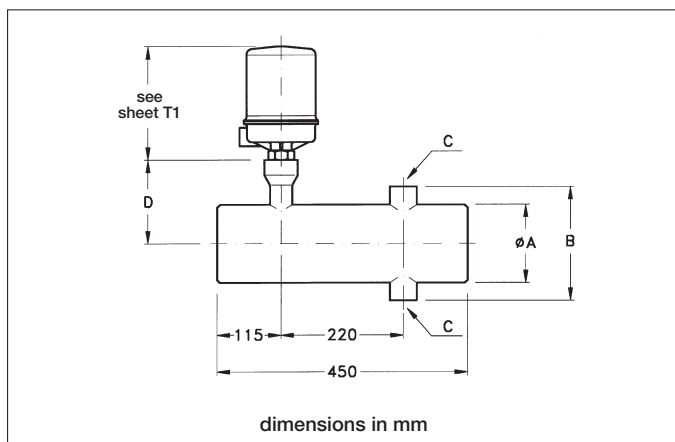
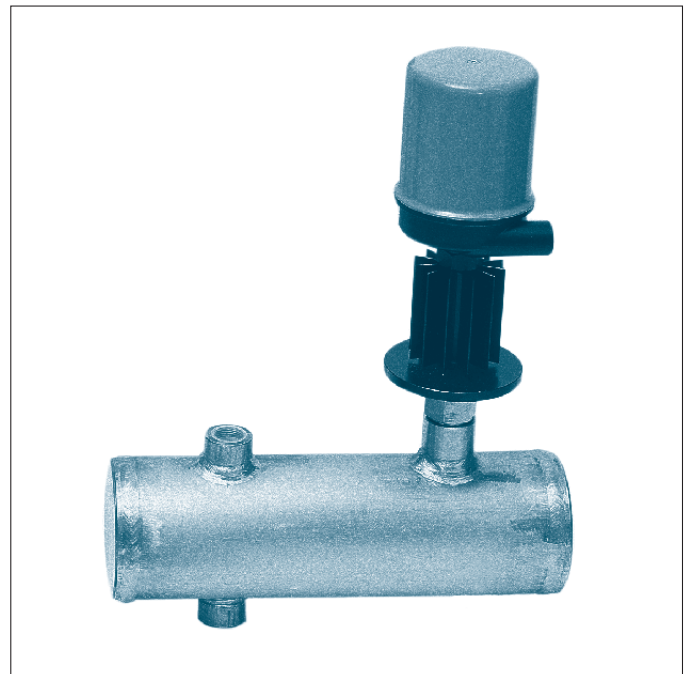
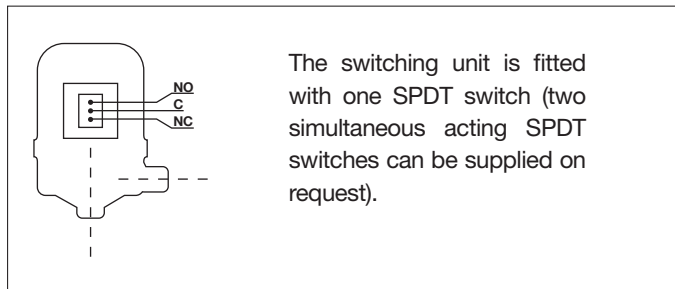


80 SERIES LEVEL SWITCHES

Balanced float level switch with non-inspectable body for external side mounting with one switching unit. For pressure up to 150 Bar, for temperatures up to 480°C max. and for fluids with a specific gravity of 0.6 kg/dm³ min. (0.4 kg/dm³ for the 84 model). Fixed differential of switch, with SP.GR. 1 kg/dm³, 25 mm. This means that if the change-over takes place by increased (or decreased) contact level, the following change-over will take place when the level falls (or rises) by 25 mm. Set point accuracy ± 5 mm.



NOTE. The set point is positioned at the middle of the connections.

MODEL	MIN. SPECIFIC GRAVITY kg/dm ³	D mm	THREADED CONNECTIONS			FLANGED CONNECTIONS		
			B CONNECTIONS DISTANCE mm	A mm	WEIGHT ~ kg	B CONNECTIONS DISTANCE mm	A mm	WEIGHT ~ kg
81	0,6	155	206	141	17	330	141	20
82	0,6	155	206	141	21	330	141	24
83	0,6	155	206	141	26	330	141	30
84	0,4	165	233	168	22	357	168	25

Standard "C" connections: Threading 1" NPT-F; Flange UNI PNDN 25/1" ANSI.....RF; 1" S.W.

On request, non-standard threads and flanges can be supplied.

For temperatures exceeding 135°C or below -10°C, fins with the "R" code are fitted on all versions; temps. of 135-250°C, **R1**; 250-500°C, **R4** ; -10 to 80°C **R3**.

WORKING CONDITIONS

MODEL	81		82		83		84		
STD "C" FLANGE	1" ANSI - NPTF - SW; DN25 UNI rating suitable for the maximum operating pressure								
VERSION	A	J	A	J	A	J	A	J	
Temperatures	100° C	98	95	145	145	197	174	88	88
	200° C	98	80	145	122	197	166	88	74
	250° C	98	75	145	115	197	155	88	69
	300° C	98	71	145	109	197	148	88	65
	350° C	96	68	142	104	193	141	86	63
	400° C	74	68	110	101	149	137	66	61
	425° C	63	65	93	100	125	136	56	60
	450° C	-	64	-	99	-	134	-	59
	480° C	-	64	-	98	-	133	-	59

Max pressure in bar

MATERIALS

CODE FOR:	Materials	Carbon steel	AISI 316
	Body	A	J
	Float	-	2

SWITCHES

Type	Mercury switch	Dry microswitch					Pneumatic switch*
Load rating	220 V a. c. 10 A 110 V d. c. 1,5 A	250 V a. c. 10 A 125 V d. c. 0,5 A	125 V d. c. 10 A	250 V a. c. 10 A 125 V d. c. 0,5 A waterproof	125 V a. c. 1 A 28 V d. c. 1 A waterproof with gold contacts	250 V a. c. 1A 24 V d.c. 3A sealed with inert gas	Output: 0 ÷ 40 psi max.
CODE	VD	M2	M3	M4	M6	M14	PNA (aluminium)

*Air inlet and output connection 1/4" NPT-F - No bleed type

ENCLOSURES

Type	Waterproof	Explosion-proof	The (WP) enclosures can be supplied with gland or with a 3 or 7 pole connector as per MIL standards. The (EP) enclosures can be supplied with explosion-proof gland. 1) CESI certificate N. 02-ATEX-126
Material	Aluminium	Aluminium	
Electrical Connection	1/2" NPT-F/GAS 3/4" NPT-F/GAS ISO M20X1.5	1/2" UNI 6125/NPT-F 3/4" UNI 6125/NPT-F ISO M20X1.5	
Protection degree	IP 66	ATEX II 2 G Ex d IIC T6 o T5 Gb ATEX II 1/2 D Ex ta/tb IIIC T85° o T100° C Da/Db IP 66	
CODE	WP	EP	

HOW TO ORDER

Example: 81 - A - 2 - M2 - WP - R1

- 81 model
- A body in carbon steel
- 2 float in S/steel AISI 316
- M2 dry micro. 250 V a.c. - 10 A
- WP waterproof enclosure
- R1 coolings fins (t 200° C); optional