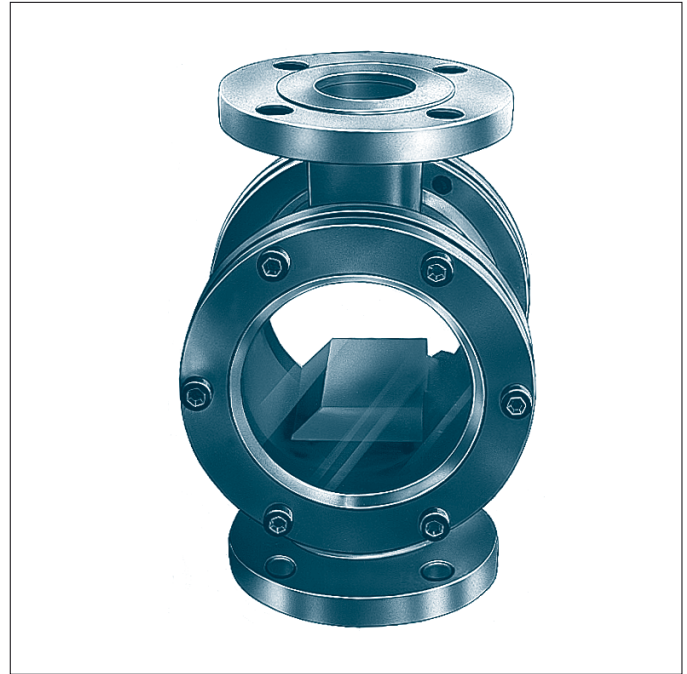


## VISUAL FLOW INDICATORS - IVF SERIES

### SPA - SPD MODELS

Visual flow indicator with moveable paddle for vertical mounting. For pressure up max. 10 Bar and temperature up to max. 130°C. On request, versions for higher pressures and temperatures can be made.

Flow indicators are devices for the visual confirmation that a fluid is flowing through the pipelines.



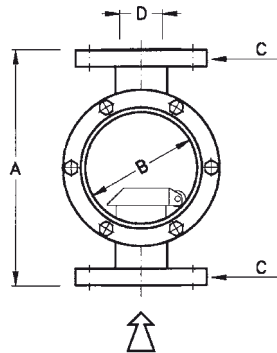
### IVF/SPA MODEL:

Paddle type visual flow indicator for vertically rising fluid. Its special characteristics means that it cannot be used as a flow meter.

Made in metal and plastic materials (see table "TOLERANCE LIMITS OF THE PLASTIC TYPE VISUAL FLOW INDICATORS")

#### FLANGED

Standard "C" flange UNI PN 10-ANSI 150 RF. On request, other types of flanges can be made.

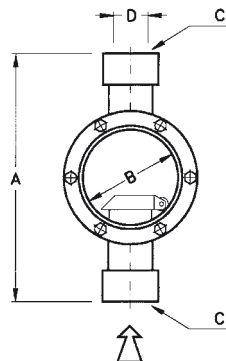


MOD.	A mm	B mm	D		WEIGHT <sup>(1)</sup> in ~ kg
			UNI	ANSI	
SPA 15	170	47	15	1/2"	3
SPA 20	180	60	20	3/4"	3,8
SPA 25	180	60	25	1"	4,5
SPA 32	230	75	32	1 1/4"	6
SPA 40	260	90	40	1 1/2"	8,5
SPA 50	280	120	50	2"	18
SPA 65	300	120	65	2 1/2"	23
SPA 80	330	145	80	3"	33

1) Refers to metallic type

#### THREADED

Standard "C" threaded connections GAS/NPT-F and socket welding.

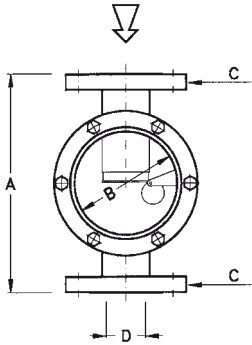


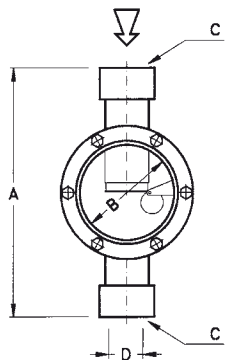
MOD.	A mm	B mm	D	WEIGHT <sup>(1)</sup> in ~ kg
SPA 15	200	48	1/2"	1,5
SPA 20	210	60	3/4"	2
SPA 25	220	60	1"	2,5
SPA 32	280	75	1 1/4"	4
SPA 40	320	95	1 1/2"	6
SPA 50	340	120	2"	13
SPA 65	370	120	2 1/2"	16
SPA 80	400	135	3"	25

1) Refers to metallic type

## IVF/SPD MODEL:

Paddle type visual flow indicator for vertically descending fluid. Its special characteristics means that also this instrument cannot be used as a flow meter. This model is not made in plastic materials.

FLANGED Standard "C" flange UNI PN 10- ANSI 150 RF. On request, other types of flanges can be made.		MOD.	A mm	B mm	D		WEIGHT in ~ kg
					UNI	ANSI	
		SPD 15	170	60	15	1/2"	3
		SPD 20	180	75	20	3/4"	3,8
		SPD 25	180	75	25	1"	4,5
		SPD 32	230	90	32	1 1/4"	5,5
		SPD 40	260	90	40	1 1/2"	7,5
		SPD 50	280	120	50	2"	16
		SPD 65	300	120	65	2 1/2"	21
		SPD 80	380	170	80	3"	30

THREADED Standard "C" threaded connections GAS/NPT-F and socket welding.		MOD.	A mm	B mm	D	WEIGHT in ~ kg
		SPD 20	210	75	3/4"	2
		SPD 25	220	75	1"	2,5
		SPD 32	280	90	1 1/4"	3,5
		SPD 40	320	90	1 1/2"	5
		SPD 50	340	120	2"	11
		SPD 65	370	120	2 1/2"	13
		SPD 80	450	170	3"	22

## MATERIALS

CODE FOR:	Materials	Carbon steel	Inox 304	Inox 316	PVC	Moplen
	Body	A (1)	I (1)	J (1)	P (2)	M (2)
	Paddle	-	-	2	5	6
(1) Internal gaskets Asbestos free (A) Neoprene (N) Teflon (T) Viton (V) - (2) Internal gaskets Neoprene (N) Viton (V)						
The flanges of the glasses and the screws can be supplied in galvanized steel or AISI 304.						

## TOLERANCE LIMITS OF THE PLASTIC TYPE VISUAL INDICATORS

MATERIALS	PVC	from 0° C to + 60° C pressure 6 bar at 25° C; 4 bar at 35° C; 1 bar at 60° C
		MOPLEN

## HOW TO ORDER

Example: IVF/SPA 50 - A - 2 - N

IVF/SPA IVF series, SPA model  
 50 diameter of connections  
 A body in carbon steel  
 2 paddle in S/steel AISI 316  
 N Neoprene gaskets

The following data is also required: type of fluid, operating temperature and pressure.